

Highest energy cosmic-rays and results from the HiRes experiment

This article has been downloaded from IOPscience. Please scroll down to see the full text article.

2007 J. Phys. G: Nucl. Part. Phys. 34 R401

(<http://iopscience.iop.org/0954-3899/34/11/R01>)

View [the table of contents for this issue](#), or go to the [journal homepage](#) for more

Download details:

IP Address: 155.101.22.208

The article was downloaded on 26/04/2013 at 19:00

Please note that [terms and conditions apply](#).

TOPICAL REVIEW

Highest energy cosmic-rays and results from the HiRes experiment

P Sokolsky¹ and G B Thomson²

¹ Physics Department, University of Utah, Salt Lake City, UT 84112, USA

² Department of Physics and Astronomy, Rutgers—the State University of New Jersey, Piscataway, NJ 08854, USA

Received 7 April 2007

Published 19 September 2007

Online at stacks.iop.org/JPhysG/34/R401

Abstract

The status of the field of ultrahigh energy cosmic-ray physics is summarized, from the point of view of the latest results of the High-Resolution Fly's Eye (HiRes) Experiment. HiRes results are presented, and compared with those of the Akeno Giant Air Shower Array (AGASA), plus the Telescope Array and Pierre Auger experiments. The HiRes measurement of the cosmic-ray spectrum and the observation of the GZK cutoff are presented. HiRes results on composition, searches for anisotropy, measurement of the proton-air total cross-section and shapes of shower profiles are presented.

(Some figures in this article are in colour only in the electronic version)

Introduction

Experimental observations are the basis for stimulating and testing theories of cosmic-ray production. At the energies of interest for this review ($>10^{17}$ eV), the main experimental observations are the energy spectrum, the chemical composition, the large and small-scale anisotropy and the correlations between them. Proposed theories about cosmic-ray origins and expected propagation effects between source and detection at the Earth suggest features to look for in these observations.

The low-intensity of cosmic-rays above 10^{17} eV requires detectors with large collecting areas. The Earth's atmosphere makes such large areas practicable because each extremely high-energy (EHE) cosmic-ray produces an extensive air shower (EAS) of charged particles. The longitudinal extent of the shower is near 10 km of atmosphere while the footprint of charged particles on the ground has a radius of order of a kilometre. Thus the showers' characteristics can be determined by sampling the particle densities with a giant array of widely spaced particle detectors on the ground, or by detecting air-fluorescence light produced by the passage of the shower particles through the atmosphere. Contemporary giant ground arrays have collecting areas in the range of 100 km² (AGASA) [1] to thousands of km² (Telescope

Array [2] and Pierre Auger [3] experiments). The Fly's Eye air-fluorescence detector [4] had an effective time-averaged aperture of approximately $100 \text{ km}^2 \text{ str}$ at energies near 10^{20} eV while the High-Resolution Fly's Eye (HiRes) [5], Telescope Array and Auger air-fluorescence detectors have order of magnitude higher time-averaged collecting areas. These detectors can only operate on clear, moonless nights and thus have a duty factor of near 10%.

An EAS measurement provides indirect information about the primary particle. To advance understanding of the origin of EHE cosmic-rays, what is needed is the energy, atomic mass and arrival direction for each particle. The indirect measurements made necessary by the low flux of these particles makes acquiring such information difficult. Shower measurements are always incomplete. Ground arrays sample particle densities sparsely and at one altitude only. The stochastic nature of the shower guarantees that particle densities will fluctuate around their expected values for a cosmic-ray of a certain energy and mass. Thus even a perfect measurement would not uniquely determine the properties of the cosmic-ray particle that initiated the EAS. Furthermore, ground array measurements must rely on a model of high-energy interactions to compute the expected particle densities for a cosmic-ray of a particular mass and energy. Any such model is an extrapolation from known interaction properties at lower centre-of-mass energies. Uncertainty in the hadronic interaction model implies an uncertainty in the expected air-shower footprint for a particle of a particular mass and energy.

The air-fluorescence measurement is much less dependent on extrapolation and gives a more reliable estimate of the primary shower energy, as it is inherently calorimetric. The magnitude of the air-fluorescence is simply proportional to the energy deposited in the atmosphere by the EAS. However, each detection technique encounters different manifestation of these intrinsic sampling difficulties and other problems associated with the experimental technique itself. The most recent experiments (Telescope Array and Auger) have deployed both kinds of detectors in the belief that 'hybrid' observation will reduce the difficulties previously encountered.

While the pioneering ground arrays of Volcano Ranch [6], Sugar [7], Haverah Park [8], Yakutsk [9] and Akeno [10] made many important contributions to our understanding of the physics of cosmic-rays above 10^{17} eV , this review will concentrate on the more recent results: AGASA (a ground array of plastic scintillator detectors) and HiRes (the second generation Fly's Eye air-fluorescence detectors). In addition preliminary results from the Pierre Auger experiment will be discussed and the status of the Telescope Array experiment, currently under construction, will be examined.

Theoretical background

Theoretical expectations of what one should see in the ultrahigh energy regime (above 10^{17} eV) include the GZK cutoff. First predicted by K Greisen, G Zatsepin and V Kuzmin in 1966 [11], this is a high-energy limit to the flux of cosmic-rays. It is caused by interactions between cosmic-ray protons of extragalactic origin and photons of the cosmic microwave background radiation (CMBR), where the centre-of-mass energy is above the threshold for pion production. Just above this threshold lies the $\Delta(1232)$ resonance that has a quite large cross-section. The pions from the decay of this resonance carry away about 20% of the proton's energy. This is thus a strong energy-loss mechanism for protons, and repeated photopion interactions decrease a proton's energy until it falls below inelastic threshold. The threshold is set by the temperature of the CMBR and the mass and width of the $\Delta(1232)$ resonance. It is about $6 \times 10^{19} \text{ eV}$ if extragalactic sources are uniformly distributed throughout the universe. If there were a local overabundance or under-abundance of sources the 'GZK energy' could change by a small amount, but the effect would be evident mostly above 10^{20} eV [12]. Thus the

shape of the spectrum fall-off above the GZK cutoff should tell us about the local abundance of sources. A steep fall-off would indicate an under-abundance of sources in the local area. Finally, the distance protons must travel before their energy is brought below the inelastic threshold is set by the $\Delta(1232)$ cross-section and the density of CMBR photons, and is about 50 Mpc.

Electron–positron pair production also occurs in the interactions between protons and CMBR photons. Much less energy is lost by the proton in such an interaction, so it takes more than an order of magnitude longer travel distance before there is a noticeable effect on the proton’s energy. This energy loss mechanism is predicted to excavate a dip in the spectrum in about the middle of the 10^{18} eV decade [13]. As discussed below, data show that there is indeed a dip in the spectrum at this location, which is called the ‘ankle’. But whether the ankle is caused by pair production is still disputed. The main other predicted cause of the ankle is the galactic/extragalactic transition. The fall to the ankle is here seen as the last gasp of the galactic cosmic-ray flux, and the rise above the ankle is the extragalactic flux showing through.

One can use other data to determine which of these two explanations of the cause of the ankle is correct. If the ankle is caused by electron–positron pair production then the cosmic-rays in this energy range are predominantly extragalactic and their composition should be uniformly light since photospallation will break up heavy nuclei over these distances. For a variety of reasons including leakage from the magnetic containment of the galaxy and preferential acceleration of heavy nuclei at the acceleration source, galactic cosmic-rays are expected to be dominated by heavy nuclei near the end of the galactic spectrum. Thus, in the case of the galactic—extragalactic transition hypothesis, a heavy galactic composition should give way to a light extragalactic one and a change of composition should be evident. We shall see that the composition measurements made by the HiRes prototype (operating in hybrid mode with the MIA muon array) and by HiRes stereo indicate an answer to this question. These data show that the composition is approximately constant over the whole ankle region, indicating that the ankle is not the galactic–extragalactic transition.

In performing fits to the cosmic-ray spectrum ankle [14], one sees that the spectral indices below and above the ankle are sensitive to two important parameters about extragalactic cosmic-ray sources, the power law index at the source and the evolution of the sources. Thus it is important to measure the properties of the ankle accurately.

It is commonly accepted that galactic sources of cosmic-rays are supernova remnants. The Cascade experiment [15] has shown that there is a rigidity-dependent cutoff at and above the ‘knee’ of the spectrum, which occurs for protons at about 3×10^{15} eV which corresponds approximately to estimates of the maximum energy of acceleration for these remnants. Above this energy, the composition gets heavier until about 1×10^{17} eV, when the limit is reached for iron primaries. To explain the origin of cosmic-rays of even higher energies one must invoke other source types, such as supermassive black holes in distant galaxies, known as AGNs [12] (the supermassive black hole at the centre of the Milky Way galaxy is relatively small and inactive). These can accelerate cosmic-rays to higher energies. These are not likely to be sources where a great deal of fusion of heavy elements has occurred, and any nuclei that are accelerated are broken up by spallation, so extragalactic cosmic-rays are expected to be of light composition (hydrogen and helium nuclei).

In addition to these three predicted sources of the structure in the cosmic-ray spectrum and composition, there is an observed feature that is not predicted, called the ‘second knee’. This is located in the middle of the 10^{17} eV decade and is a steepening of the spectral fall-off (from about $E^{-3.0}$ to $E^{-3.3}$ spectral behaviour). Because of differing energy scales among the various experiments that have seen it, the exact energy of the second knee is not known. Collecting

data on the spectrum and composition in the energy region of the second knee should be of the highest priority for future experiments.

This theoretical and experimental situation raises several questions to be answered by the current generation of experiments.

- (1) Is the GZK cutoff present? At what energy does it occur? How steep is the fall-off above the cutoff? Is there a local under or over abundance of sources?
- (2) What is the energy of the ankle? What are the power law indices below and above it?
- (3) What is the composition as a function of energy? Is it heavy or light? Can we see a transition region? Is the transition at the ankle or lower in energy?
- (4) What is the cause of the second knee? Is the second knee a galactic feature (if so, it would show up in the heavy component of the flux) or an extragalactic feature (the composition would then be light)?
- (5) What are the sources of the highest energy cosmic-rays? Is there anisotropy in the cosmic-ray flux that points to sources? Is there large-scale anisotropy related to galactic magnetic fields?

History

The AGASA experiment was an expansion of the Akeno ground array, located at the Akeno observatory in Japan (35.8°N, 138.5°E). The AGASA array consisted of 111 plastic scintillators each with a 2.2 m² area spaced by approximately 1 km and covering an area of ~100 km². These scintillators have an essentially equal response to the electrons and muons in the EAS. In addition, there were 27 sets of proportional counters located under absorbers, which were used to measure the muon component of the EAS. The muon threshold energy was 5 GeV. Full operation of the array began in 1993 and it was decommissioned in 2004. All the counters were connected by an optical fibre network.

The Fly's Eye experiment was located at Dugway, Utah (40°N, 113°W) at an atmospheric depth of 860 gm cm⁻². There were two detectors, Fly's Eye I consisting of 67 spherical mirrors of 1.5 m diameter and Fly's Eye II, consisting of 36 similar mirrors located 3.3 km away. Each phototube subtended a 5°-by-5° pixel in the sky. Events were observed in monocular mode when either detector satisfied a minimum trigger requirement and in stereo mode when both detectors triggered on the same event. The monocular time-averaged aperture approached 100 km² str near 10²⁰ eV while the stereo aperture was ~40 km² str above 10¹⁹ eV. The detectors were operated from 1982 to 1992.

A second-generation air-fluorescence experiment, the High-Resolution Fly's Eye (HiRes) was proposed in the early 1990s and was completed in 1997 (HiRes I) and 1999 (HiRes II). It was also located at Dugway, Utah and had two air-fluorescence detector sites, HiRes I and HiRes II spaced 12.6 km apart. Dugway Proving Grounds have a clean atmosphere and low light pollution. Each HiRes site was on a hill, above the bulk of most of the aerosol haze in the atmosphere. The two sites gathered data independently and the data were analysed in either monocular or stereo mode. This detector had smaller phototubes resulting in a pixel size of 1° by 1° in the sky. Among other improvement over the original Fly's Eye was an FADC data acquisition system at HiRes II which allowed a much more precise measurement of the longitudinal shower profile. The HiRes-I detector took data in monocular mode from 1997 to 2006, while HiRes II operated from 1999 to 2006. Consequently the data set from this experiment is divided into a large monocular data set from HiRes I, a monocular data set from HiRes II and a combined stereo data set covering 1999 to 2006.

The air-fluorescence technique

Ionizing particles traversing the atmosphere produce light by exciting the 2P and 1N band systems of N_2 and N_2^+ molecules [16]. This excitation and the resultant fluorescence have been measured by a number of groups [17] as a function of pressure and temperature, most recently by the FLASH [18] and Air Fly [19] collaborations. In the 300 to 400 nm wavelength region that is effective in producing photomultiplier signals, the air-fluorescence efficiency is approximately 4.0 photons m^{-1} per ionizing particle. The competition between fluorescence and collisional de-excitation makes this fluorescent yield nearly independent of atmospheric pressure (up to ~ 12 km altitude).

As an EAS propagates through the atmosphere, its charged particles excite air fluorescence. This light is emitted isotropically. In addition to air fluorescence, Cherenkov light is produced within a cone of approximately 2.5° of the charged particles. The resultant Cherenkov light distribution, reflecting the multiple scattering of electrons, is strongly beamed forward along the EAS axis. Air-fluorescence detector mirrors gather these photons and focus them onto arrays of photomultiplier tubes (PMTs). Each PMT views a small solid angle of the sky. An EAS produces a characteristic pattern of pixel triggers as it propagates through the atmosphere with nearly the speed of light. Air-fluorescence detectors record the PMT signal amplitude as a function of time (set by either the phototube crossing time or the FADC clock) and this information, after appropriate corrections, can be used to determine the longitudinal shower profile (number of ionizing particles as a function of atmospheric depth). The integral of this profile is proportional to the primary shower energy and the proportionality constant is largely independent of the hadronic physics at the primary interaction.

Photons from an EAS travel through the atmosphere to reach the mirrors and will scatter on the air molecules and aerosols in their path. Molecular or Rayleigh scattering is well understood and the effect is straightforward to calculate once the molecular density profile is known (for example from balloon radiosonde measurements). Scattering from aerosols varies with the aerosol content of the air and the nature of the aerosols and must be measured on an hourly basis. The effect of aerosol scattering is typically characterized by the horizontal aerosol extinction length, the exponential drop-off of aerosol density with altitude, the vertical aerosol optical depth and the angular dependence of the scattering (the phase function). Lasers with steerable beams, located at some distance from the detector sites, are used to sweep through the air-fluorescence detector aperture and determine these parameters [20]. In clear desert atmospheres such as are present at the Dugway site, the net effect of aerosol variations on the total attenuation of light is small and is well approximated, over the course of an experiment, by an average stable atmosphere.

Lasers also give an indication of the presence of clouds in the atmosphere since a laser beam hitting a cloud will mushroom out due to enhanced multiple scattering. Other tools for measuring the atmosphere include infrared cloud monitors and vertically directed xenon flashers located between the air-fluorescence detectors [21].

Air-fluorescence detectors need to be carefully calibrated since the energy of an EAS, while calorimetrically determined, depends on the absolute gain of the detector. Calibration is typically done using NIST-traceable stable light sources, and an overall end-to-end calibration is available using laser beams whose energy at injection into the atmosphere is carefully measured using NIST calibrated detectors [22]. The relation between PMT signals and this energy give the overall detector calibration constant. Typical systematic errors for this absolute detector calibration are 10%.

Event reconstruction

The reconstruction of the EAS longitudinal shower profile depends on the determination of the shower geometry, i.e. the impact parameter of the shower (R_p) and the shower zenith and azimuth angle. This can be determined in monocular mode by fitting the expected dependence of the relative arrival time of the signals in the sequential pixels in the shower-detector plane on these parameters. The shower-detector plane is determined by the best fit to a plane subtending the direction vectors of the pixels triggered by the EAS. When stereo information is available, the shower geometry is simply the intersection of the two shower detector planes (from HiRes I and II, for instance). Once the geometry is known, corrections for solid angle effects, variations in acceptance from pixel to pixel (due to shadowing of the mirrors by the phototube cluster), mirror reflectivity and PMT and electronics gain as well as atmospheric attenuation are applied. The net result is a measurement of the number of photons emitted at the EAS location as a function of atmospheric depth in bins dictated by either the pixel size (1° for HiRes) or by the FADC timing slice (typically 100 ns). Knowledge of the air-fluorescence efficiency then allows conversion to shower size (number of ionizing particles) versus atmospheric depth.

The ground array technique

Ground arrays sample the number of particles at observation level in an EAS produced by a primary cosmic-ray. There are significant fluctuations in the position of depth of shower maximum (X_{\max}) for an event with the same energy and atomic mass. Hence, simply summing the total density at observation level is inadequate. Hillas [23] proposed a method to much reduce the influence of shower development fluctuations on the determination of shower energy by ground array experiments. The method relies on the fact that particles at distances of 500 to 1000 m from the core of the EAS at the observation level are most likely to have their origin at shower maximum. Since the number of particles at shower maximum is proportional to the initial particle energy and the fluctuations in particle number are minimized at this stage of shower development, a measurement of shower particle density far from the core should give more accurate results. Hillas' idea has been confirmed by many simulations and has been incorporated in the analysis of data by the Haverah Park [24] and Yakutsk [25] groups in the past. While the details depend on the hadronic model used and on the nature of the primary particle, all simulations agree that the fluctuations are minimized near 600 m for EAS with energies near 10^{19} eV near the sea level. A complication comes from the fact that showers at nonzero zenith angles have different degrees of attenuation in the atmosphere. Hence the distant density measurement $\rho(600)$ has to be corrected for a zenith angle related effect. This correction factor can be determined from the simulations but is then hadronic model dependent. It can in principle also be determined experimentally by using the equal intensity method. This posits that since the cosmic-ray flux impacting the atmosphere at a given energy should be independent of the zenith angle, the dependence of cosmic-ray rate on the zenith angle for a fixed interval in $\rho(600)$ can be used to derive this correction factor. An additional assumption that must be made is that the composition of cosmic-rays is not changing rapidly in the energy region of interest. The lateral distribution of charged particles, especially the muon component, will be different near 600 m for p and Fe incident nuclei, for example. The extensive air showers produced by a heavy composition will also attenuate much faster with the zenith angle than those from a light composition. Additionally, this method requires significant statistics and, given the power law nature of the cosmic-ray flux, is difficult to use at the highest energies.

Hybrid experiments such as the Telescope Array and Auger have another option. The energy scale obtained by using the $\rho(600)$ parameter and its zenith angle dependence can be calibrated using events where the air-fluorescence detector also has a good energy measurement. This largely removes any dependence on hadronic models and complex simulation codes. However, since the on-time for air-fluorescence detectors is usually less than 10% of the ground-array on-time, the calibration becomes uncertain at the highest energies due to limited statistics. Currently, linear extrapolation is used to avoid this problem [26], but this moots the question of whether the zenith angle dependent correction factors for the ground array are in fact linear with energy. Hence the systematics of ground array calibrations, either using simulations or calibrations from air-fluorescence detectors, will remain problematic at the highest energies of interest.

Hadronic interaction models and EAS simulation

The measurable aspects of an EAS (energy, X_{\max} , lateral and longitudinal profile, number of electrons or electron density and number of muons or muon density) depend on the nature of the primary particle and the hadronic interaction physics at each interaction and decay point. Since the CM energy of the primary interaction is well beyond accelerator energies, theoretical models must be used to predict multiplicity, inelasticity, the total inelastic cross-section and other variables. Nuclear effects are also important, particularly if the incident particle is a heavy nucleus. Several QCD-based theoretical models, such as DPMJET [27], nexus [28], QGSJET [29] and SIBYLL [30], are widely used to predict EAS development. These models differ in their predictions of a number of parameters. The total inelastic cross-section in particular differs significantly in these models at the highest energy (see figure 14). An independent measurement of this quantity at ultrahigh energies can serve as a test of these models and as a step to achieving a self-consistent description of the EAS development as well as being of great interest to high-energy physics. Methods for determining this are discussed below.

While the distribution of X_{\max} in the atmosphere depends almost entirely on the nature of the primary particle and the choice of interaction model for the first few generations in an EAS, the situation is different for the lateral distribution for electrons and muons, particularly at large distances from the shower core. Since the average energy of the parent pion or kaon that produces muons at a kilometre from the core is on the order of 100 GeV, it is the low-energy part of the EAS simulation that is also an issue [31]. Since the parent hadrons are typically produced at small Feynman x where there are almost no accelerator data, theoretical extrapolations must be used even in this energy range. Figure 1 shows the surprising result: the various low-energy simulation packages give significantly different predictions for the muon density $\rho_{\mu}(1000)$ and even the electron density [32].

A number of experiments have been proposed or are in the planning and implementation stage, which will hopefully alleviate this issue as well as improving our knowledge of the higher energy physics. The Fermilab MIPP experiment [33] will cover the entire range in Feynman x for a variety of beam and secondary particles near 100 GeV. Proposed experiments at the LHC [34] will enrich our knowledge of small- x physics at the highest energies and will further constrain hadronic models used in EAS simulations.

A related issue is the treatment of baryons in the EAS. Data from RHIC on parton saturation effects [35] have only recently been incorporated into EAS simulation models [36] (see below). A correct accounting of these effects may in fact be the key to a self-consistent description of EAS in terms of lateral and longitudinal developments.

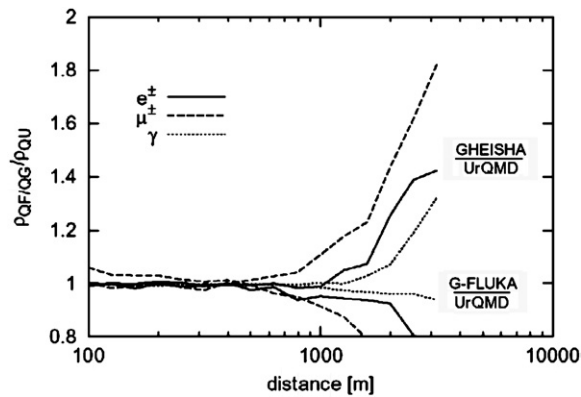


Figure 1. Dependence of lateral distribution functions on lower-energy models. The high-energy part of the shower is simulated using QGSJet while GHEISHA, G-FLUKA and UrQMD are used as low-energy models.

Fly's Eye and AGASA

The Fly's Eye and AGASA spectrum measurements set the stage for those made by HiRes. The Fly's Eye experiment made two types of spectrum measurements, monocular and stereo [37]. The two differed in the ability to observe the 'ankle' of the cosmic-ray spectrum. It is thought that the better resolution of the Fly's Eye stereo spectrum made the difference in this observation. The aperture of this pioneering experiment was a bit too small to measure the spectrum at 10^{20} eV, hence too small to observe the GZK cutoff. However, one event was collected, at an energy of 3.2×10^{20} eV, well above the expected cutoff energy. This was a remarkable event, only 12 km from the Fly's Eye I detector, which made a good measurement of its profile and energy [38]. Unfortunately, the event fell behind the Fly's Eye II detector so was not seen in stereo. This is one of a set of events, seen by experiments too small to measure the spectrum at the GZK energy that seemed to predict that something unusual was occurring in the GZK energy region [39].

The AGASA experiment was the first to have a large enough aperture to measure the spectrum at the GZK energy with reasonable statistics [40]. Figure 3 shows their result (inverted triangles) where the y-axis is the differential flux multiplied by E^3 . This transformation removes the overall power-law trend and allows details in the spectrum to be seen more clearly. Their result was different from the Fly's Eye stereo spectrum in that the spectrum was about a factor of 2 higher in normalization. This could be due to a different energy scale in the two experiments. Another aspect of their spectrum was very startling: they saw the spectrum continuing as if the cutoff were absent. The most significant part of their result was the observation of 11 events above 10^{20} eV. Their measurement of the spectrum launched many theoretical speculations as to how the GZK cutoff mechanism might possibly be evaded.

However, their result was retracted in 2006 [41]. They discovered an error in their data analysis having to do with the zenith angle correction (see above). The effect of improving their analysis was to lower their energy scale by about 10%, and correct an energy scale nonlinearity which lowered their highest energy events by about 15%. The result was reducing the 11 events above 10^{20} eV to 5 or 6. The AGASA collaboration also dropped their claim that the GZK

cutoff is absent, saying instead that their data do not have the statistical power to make a claim either way.

The HiRes monocular spectrum

The HiRes experiment, on the other hand, has observed the GZK cutoff. Using the fluorescence experimental and analysis techniques described above plus an augmented Monte Carlo simulation method, the spectrum was measured in monocular mode and it shows the GZK cutoff at the 5σ level.

An important aspect of measuring the spectrum with a fluorescence experiment is calculating the aperture. Since that aperture varies with energy (higher energy events are brighter and hence can be seen at larger distance) one might expect that the aperture calculation by the Monte Carlo (MC) technique would be more difficult than for ground array experiments, but just the reverse is the case.

The Monte Carlo technique in cosmic-ray physics has two parts: simulation of showers using a shower MC program such as Corsika [42] or Aires [43] and hadronic generator routines (to extrapolate cross-sections measured by accelerator experiments to higher energies) such as QGSjet [29] or Sibyll [30]. The second part is a detector simulation program where the air-fluorescence light generated by the showers is propagated to the apparatus and the detector response calculated, or, for a ground array, the number of particles that strike a detector is translated into a pulse height.

The shower MC process has several difficult points where ground arrays are concerned. First, following every particle in the shower is prohibitive in time (a 10^{20} eV shower takes a month to generate on a typical computer), so methods have been developed to speed up the generation of showers by following particles statistically, but they lose information on the fluctuations in shower development in the tails of showers. Since ground arrays work only in the tails of the lateral distribution (the central part of a shower would also drive a ground array detector into saturation) one cannot reliably predict the resolution of a ground array experiment by this method. In addition the uncertainty in the shower simulation process due to extrapolation of cross-sections in energy makes the entire simulation process model dependent. Even calculating the efficiency of a ground array reliably by this technique may be beyond the state of the art.

On the other hand, for a fluorescence experiment that sees only the central part of the shower, where there may be 10^{11} particles at shower maximum, calculating shower development statistically is straightforward. In addition, the energy measurement is done calorimetrically, so a fluorescence experiment is insensitive to cross-section extrapolations. Thus it should be possible to perform an accurate aperture calculation for a fluorescence experiment.

The largest effect on the aperture (in addition to the intrinsic brightness of showers) comes from the fact that fluorescence detectors designed for high-energy observations cover a limited extent of the sky in elevation. HiRes and TA detectors look from 3° to 31° in elevation, where Auger detectors look up to 29° . This bias affects the aperture and to perform an accurate MC detector simulation one must make sure the events in the simulation populate the correct angular range in elevation. One does this by making sure that they have the same X_{\max} distribution as the data. Generating a correct mix of proton and iron events from a given hadronic model generator, for example QGSjet, can mimic the measured X_{\max} distribution well (it turns out to be about an 80/20 ratio for protons/iron above 10^{18} eV for QGSjet). It does not matter if QGSjet correctly simulates protons or iron for the aperture calculation as long as it represents the measured distributions adequately. The same is true of Sibyll (here

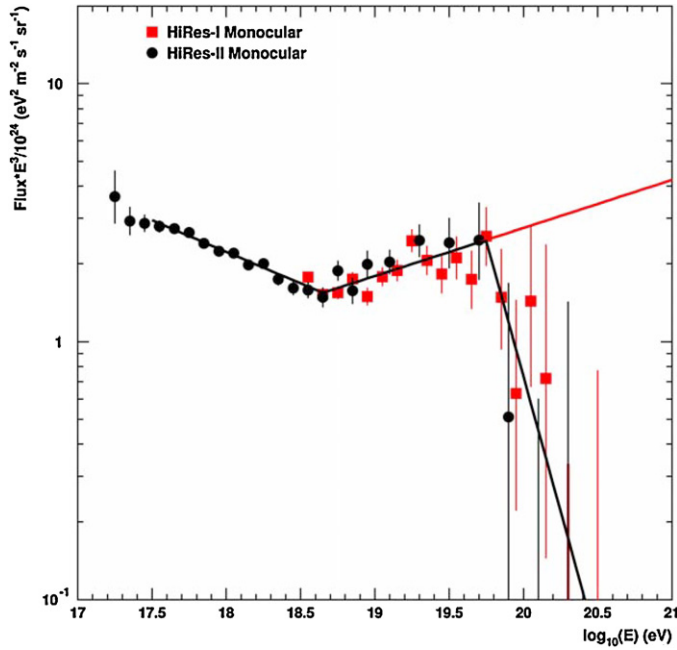


Figure 2. Spectrum measured by the HiRes detectors in monocular mode. Squares are the spectrum from HiRes-I and circles are from HiRes-II. The ankle and the GZK cutoff are evident in these data. The line is a fit to the data described in the text, with an extension to higher energies of the segment from the ankle to the GZK cutoff.

one must use about a 60/40 ratio). In fact, one can use either hadronic generator program and one gets the same answer for the experiment's aperture to within a few per cent. Thus for a fluorescence experiment one can simulate the aperture and measure the spectrum in a model-independent way.

To calculate the aperture as a function of cosmic-ray energy, a very accurate Monte Carlo simulation of the HiRes experiment was performed [44]. Two libraries of cosmic-ray showers were generated using the Corsika shower program and QGSJet hadronic generator: one for proton and one for iron primaries. A detector simulation program placed library events in the atmosphere in the vicinity of the HiRes-II detector, calculated the fluorescence and Cerenkov light generated by the showers, and how much light would have been detected. A complete simulation of the optical path, trigger and readout electronics was performed. This simulation followed the experimental conditions that pertained over the data-collection period. The result was written out in the same format as the data and analysed by the same programs. The stereoscopic energy measurement of the Fly's Eye experiment [37], and the HiRes stereo X_{\max} composition measurement [48] were used as inputs.

The Monte Carlo simulation can be checked for accuracy in representing the detector trigger efficiency by comparing many Monte Carlo distributions of geometrical and kinematic variables to the data. The comparisons are in excellent agreement and indicate good understanding of how to simulate the experiment.

The result of the monocular spectrum measurement is shown in figure 2. In this figure the ankle is seen clearly as a dip in the spectrum centred at $\log(E) = 18.6$, and a sharp fall-off is seen at about $\log(E) = 19.8$, which is 6×10^{19} eV, exactly the expected GZK energy. In figure 2, a set of three lines is shown, representing a multi-power law fit to the data. A fit with

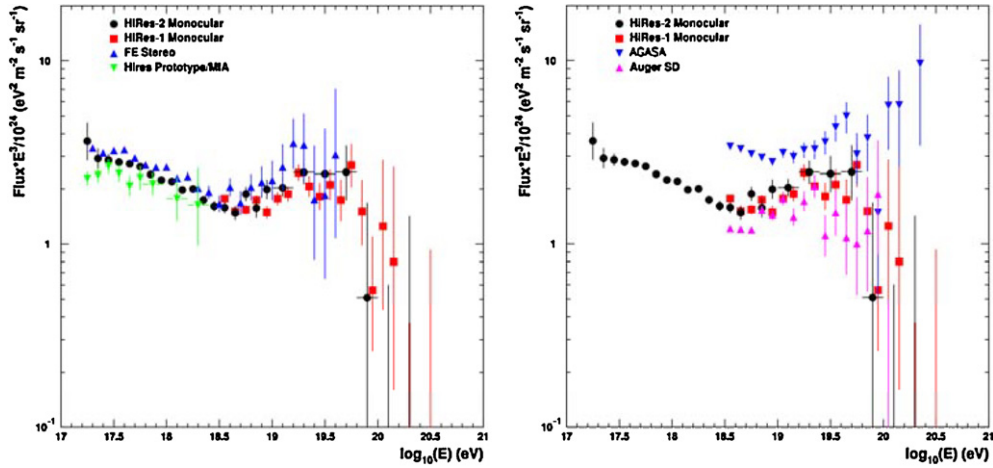


Figure 3. The left part shows the two HiRes monocular spectra. In addition the Fly’s Eye stereo spectrum is shown and the HiRes/MIA spectrum. The right part shows the two HiRes monocular spectra, plus the original AGASA spectrum and the 2005 Auger spectrum.

a single power law over the entire energy range has a χ^2 of 162 for 39 degrees of freedom (dof). A fit using two power laws with one break allowed (and fit by MINUIT) finds the break at the ankle at $\log(E) = 18.65 \pm 0.05$, and has a χ^2 of 62.9 for 37 degrees of freedom. If two break points are allowed, as shown in the figure, they are found to be at 18.65 ± 0.05 and at 19.75 ± 0.04 . In other words the data show the GZK energy to be $10^{19.75}$ eV. The fit has a χ^2 of 39.5 for 35 dof. The improvement in χ^2 for a change of 2 dof implies that the two-break point fit is preferred at a confidence level corresponding to 4.5σ .

One can also quantify the significance of the break by extending the fit rising from the ankle and comparing the number of events one would expect to see, if the break were absent, with the number we actually see. The numbers are 39.9 expected and 13 seen. The Poisson probability for the observed deficit corresponds to a significance of 4.8σ , consistent with the previous estimate. This estimate takes into account that some events are seen in both HiRes-I and HiRes-II mono datasets, and removes the overlapping events from the HiRes-I mono dataset.

The break in the spectrum is definitely present. The break occurs at the energy predicted for the GZK cutoff. One therefore concludes that it is the GZK cutoff. The spectral indices to the left and right of the break are 2.81 ± 0.03 and 5.1 ± 0.7 , respectively. The fall-off to the right of the break is very steep, which may have implications for the over or under abundance of sources in the local area (within about 50 Mpc).

Figure 3 shows the HiRes mono-spectra compared with previous fluorescence experiments’ results: the Fly’s Eye stereo spectrum and the HiRes/MIA hybrid spectrum. These three measurements are in good agreement. The figure also shows the same HiRes mono-spectra plus the original AGASA spectrum.

The HiRes stereo spectrum is shown in figure 7. This spectrum is consistent with the monocular spectra and also shows the ankle and break due to the GZK cutoff. With two detectors observing the same events one can use the two reconstructions to measure the energy resolution. This is shown in figure 5, where $(E_1 - E_2)/E_2$ is shown (here 1 and 2 refer to the two HiRes detectors). The result is approximately Gaussian and is consistent with resolutions of about 30% and 15% for HiRes-1 and HiRes-2, respectively at $10^{18.2}$ eV.

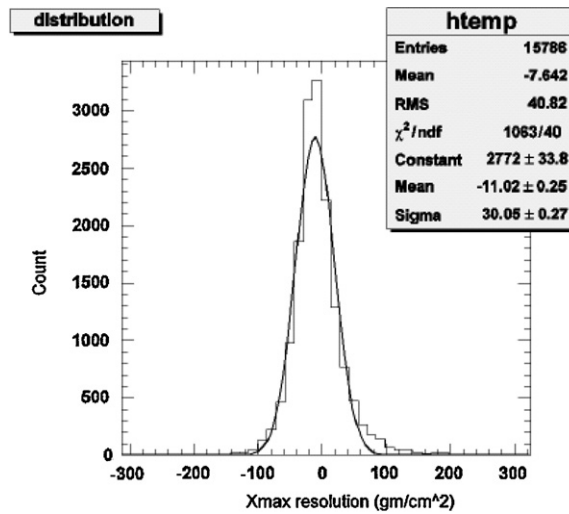
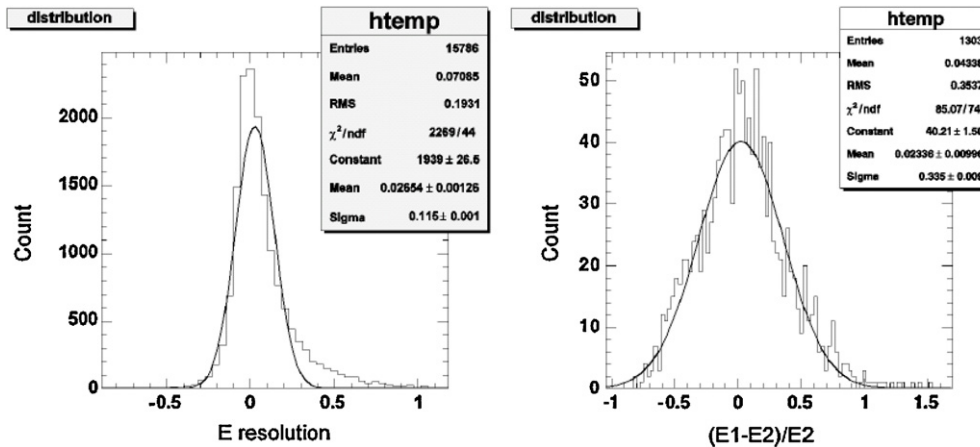
Figure 4. Stereo Hires X_{\max} resolution.

Figure 5. HiRes stereo energy resolution (left) and energy difference distribution (right).

The HiRes stereo data

The HiRes experiment was designed as a stereo experiment and while the monocular data have the largest statistics because of the early turn-on of HiRes I, the stereo data set has the best geometric, X_{\max} , and energy resolution. The expected X_{\max} and energy resolutions are shown in figures 4 and 5. This is based on simulated events as described in the composition section. As indicated there, stereo data allow two independent measurements of the same event and the ‘pull’ distribution for data and simulations should be similar if the detector resolution is correctly estimated. Figure 8 shows that this is indeed the case.

The calculation of an energy spectrum requires a good understanding of the detector aperture. Since the aperture for an air-fluorescence detector grows with energy and the

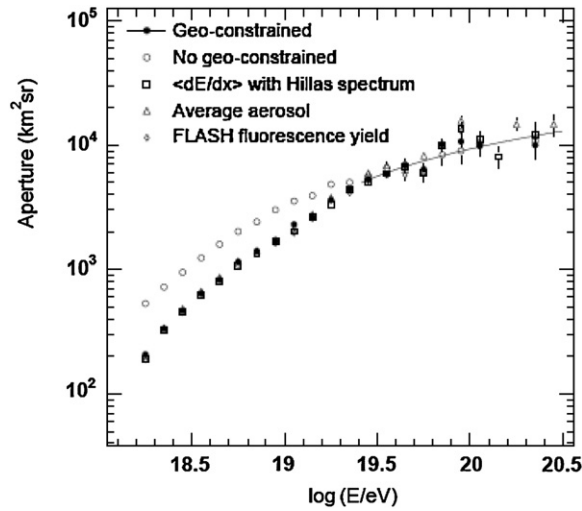


Figure 6. HiRes stereo aperture. Open symbols are the total aperture. Filled symbols represent the ‘fully-efficient’ aperture.

aperture of a stereo detector is the intersection of two growing apertures, careful crosschecks are necessary to insure that the calculation is correct.

The geometric distribution of showers reconstructed by the HiRes experiment reflects precisely the detection efficiency of showers and can be used to check the efficacy of the simulation. All distributions in geometrical variables for data and for simulations, such as the impact parameter R_p , zenith and azimuth angles, are in good agreement.

The HiRes stereo aperture is shown in figure 6. The aperture varies very rapidly below 3×10^{18} eV, then flattens out and saturates at near $10\,000$ km^2 str at the highest energies. Since about half of the stereo data come from distances where the detector trigger efficiency falls off, it is useful to also define a ‘fully efficient’ aperture. Here one sets a maximum impact parameter for each energy bin, where the value of $R_{p\text{max}}$ is determined as the distance at which the trigger efficiency just begins to decrease. The ‘fully efficient’ aperture is also shown in figure 6. Note that most of the difference between the two apertures is at low energies. Defining a ‘fully efficient’ aperture has the added benefit that the resultant spectrum is much less sensitive to atmospheric extinction variation. Changes in atmospheric extinction do not affect the triggering efficiency of events that are close enough to the detector.

After cuts to make sure that the shower profile is well measured, figure 7 shows the spectrum for the ‘fully efficient’ aperture [45]. No cloud cuts have yet been applied to this spectrum, however. The structure in the spectra and spectral normalization are in good agreement with monocular data.

The X_{max} method for determining composition

The atmosphere serves as an absorber for the energy flow of an EAS. The slope of the distribution of first interactions depends on the mass of the primary particle. At the highest energies, protons have an interaction length of near 70 gm cm^{-2} while iron nuclei would have an interaction length of near 35 gm cm^{-2} . While these numbers are small compared to the typical extent of an EAS (1200 – 1400 gm cm^{-2}), the distribution of first interactions is

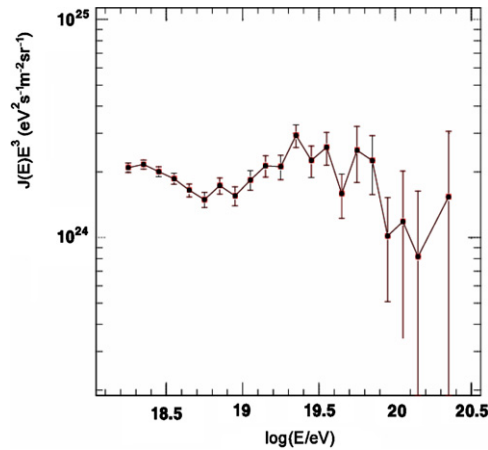


Figure 7. The HiRes stereoscopic spectrum with ‘fully efficient’ aperture and no cloud cuts.

reflected in the distribution of depth of shower maximum X_{\max} in a way that amplifies this small difference.

Simulations show that proton primaries with energies near 10^{19} eV produce a distribution of X_{\max} with a mean near 700 gm cm^{-2} , while iron primaries of the same total energy will have an X_{\max} mean of 80 to 100 gm cm^{-2} shallower. Because an iron nucleus produces an EAS which is basically a superposition of 56 lower energy showers, the fluctuations of X_{\max} around the mean for iron are smaller than for protons, with iron fluctuations having a σ of near 30 gm cm^{-2} and protons 70 gm cm^{-2} . Intermediate mass nuclei will lie between these numbers. While the absolute value of the position of the mean X_{\max} is model dependent (typical variations are $20\text{--}40 \text{ gm cm}^{-2}$ for protons and 20 gm cm^{-2} for iron at a fixed energy), the separation between the predicted mean X_{\max} ’s is much less sensitive to the model. This is also true for the difference in the fluctuations about the mean.

A related approach is to look at the so-called elongation rate of the shower maximum. Given a hadronic model and a primary particle type, the mean X_{\max} of an EAS will deepen linearly with the logarithm of the primary energy. This elongation is seen even in the simplest toy models of an EAS. The slope of this line, per energy decade, is called the elongation rate and is typically $50\text{--}60 \text{ gm cm}^{-2}/\text{decade}$ independent of hadronic models and particle type [48]. A change in primary composition from heavy to light over some energy interval would produce an elongation rate larger than the $50\text{--}60 \text{ gm cm}^{-2}$ for an unchanging composition, while a change from light to heavy would produce a smaller or even negative elongation rate. Because of this relative insensitivity to hadronic models and to systematic errors affecting absolute X_{\max} determination, the measurement of the elongation rate has been the first approach to determining composition [46]. In many models, we anticipate a transition from a galactic to an extragalactic cosmic-ray flux somewhere between 10^{17} and 10^{19} eV [47]. This transition may be accompanied by a change from a relatively heavy composition to a relatively light one. Thus observation of a change in the elongation rate as a function of energy would be of great interest. If a change in the elongation rate can be correlated to changes in the fluctuation around the mean X_{\max} , a convincing case can be made for a change in the cosmic-ray composition in a given energy range. The precision in X_{\max} resolution attained by HiRes and expected for TA and Auger ($\sim 30 \text{ gm cm}^{-2}$) is sufficient to achieve this goal.

HiRes X_{\max} measurements

The HiRes stereo data [48] have an energy threshold for doing physics near 10^{18} eV. This threshold is largely determined by the limited elevation angle of the HiRes mirrors ($3\text{--}17^\circ$ for HiRes I and $3\text{--}31^\circ$ for HiRes II). Lower energy EAS develops higher in the atmosphere and a strong bias towards more penetrating EAS thus develops. A previous hybrid air-fluorescence ground-array experiment, the HiRes-Mia prototype [52], was set up to study the energy region from 10^{17} to 10^{18} eV. The MIA detector consisted of 16 muon detector patches formed with 64 scintillation counters each, covering 370×370 m with an active area of over 2500 m². The patches were buried 3 m under the Earth's surface. EAS muon arrival times were recorded as well as the number of counters triggered. The threshold energy for detecting a muon was 850 MeV. The hybrid aperture for this experiment becomes fully efficient above 4×10^{17} eV corresponding to a value of 5.2 km² str. The MIA counters determine the muon density via the pattern of hit counters observed in the shower. An estimate of the muon density at 600 m from the core, $\rho_\mu(600)$ is then determined by a fit. For these X_{\max} measurements, 14 HiRes-I mirrors were configured in an inverted pyramid shape centred on the MIA ground array and extending from 3° to 70° in elevation. This gave excellent X_{\max} acceptance over this energy range. The geometrical reconstruction of hybrid events was accomplished using monocular timing from HiRes I and MIA counter timing of the shower front arrival time. This additional timing constraint from the ground array substantially improves the precision of geometrical reconstruction over a simple monocular approach. The geometrical reconstruction of these hybrid events leads to a precision similar to HiRes stereo reconstruction. Thus in what follows, one can combine the HiRes-MIA prototype data with the HiRes stereo data. In so doing, an energy range from 10^{17} to near 10^{20} eV is covered with minimal biases in X_{\max} .

Since a pure proton and a pure iron composition are the expected extremes of the makeup of the cosmic-ray flux, this is a natural place to start. To take account of hadronic model dependence, several simulations-QGSJet and SIBBYL can be compared. Proton and iron EAS generated using these simulators are fed to the HiRes detector simulation and, if it is determined that the air-fluorescence detector triggered, 'fake' data are written out in the same format as real data and analysed using the standard reconstruction routines. In the case of HiRes-MIA prototype data, the MIA array is also simulated. Comparing reconstructed X_{\max} to input X_{\max} allows the study of the X_{\max} resolution and any possible biases. Predictions for the elongation rate for protons and iron nuclei as well as their fluctuations are also generated. These can then be compared to real data.

Figures 4 and 5 show the expected X_{\max} and energy resolution for the Stereo HiRes data. Since data and Monte Carlo will be compared in order to extract the cosmic-ray composition, it is vital that the Monte Carlo accurately reproduce the detector and reconstruction resolution. Stereo data are unique in that there are events that have X_{\max} independently measured by HiRes I and HiRes II. These distributions of the differences in X_{\max} and energy can be used to confirm estimates of Monte Carlo resolution. Figure 8 shows the pull, defined as the difference divided by the average, for X_{\max} and energy, respectively, after all cuts. The nearly Gaussian shape of the pull and the nearly identical pull distribution for Monte Carlo and data show that the Monte Carlo resolution represents the real detector resolution well. For the HiRes-MIA data, no such internal crosschecks on the resolution are possible since only monocular data are available. However, the air-fluorescence part of the simulation is very similar to that used for the stereo HiRes data.

While different hadronic models produce a 10 to 30 gm cm⁻² shift in the absolute position of the mean X_{\max} , the separation between the composition extremes is similar for all models. The detector Monte Carlo program and the proton and Fe profile libraries are also used

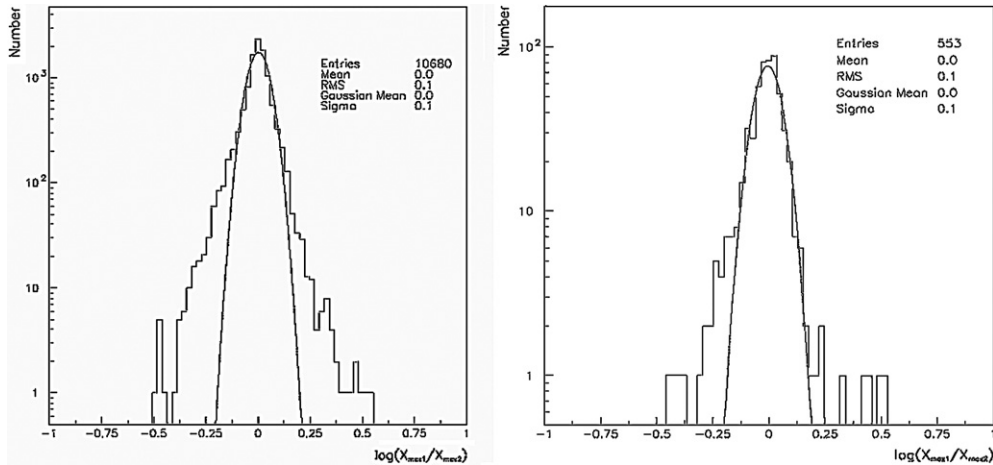


Figure 8. Pull distributions for X_{\max} . $\text{Log}_{10}(X_{\max 1}/X_{\max 2})$ for simulated data (left); same variable, but for actual data (right).

to check that there is no significant X_{\max} bias for the energy interval of interest. Above 10^{18} eV and after all cuts, reconstructed Monte Carlo data lead to no significant differences in the elongation rate from the input value for either protons or Fe nuclei. Similar results are found for the HiRes prototype detector simulation.

Figure 9 shows the real data elongation rate after data quality cuts (identical to the Monte Carlo data cuts). Above 10^{18} eV, the measured elongation rate (ER) is 54.5 ± 6.5 gm cm⁻²/decade (statistical errors only). The systematic errors on the elongation rate are estimated to be 6 gm cm⁻²/decade. This is to be compared to 50 and 61 gm cm⁻² for QGSJet protons and iron nuclei, respectively and 57 and 59 gm cm⁻² for SIBYLL protons and iron nuclei. The data above 10^{18} eV are thus quite consistent with an unchanging composition. The HiRes-MIA prototype data at lower energies give an elongation rate of 93.0 ± 8.4 gm cm⁻²/decade, strongly suggesting a change in composition below 10^{18} eV in the direction of an increasingly heavy composition near 10^{17} eV.

Figure 9 also shows that the absolute value of the mean X_{\max} at any energy above 10^{18} eV is in much better agreement with a light, mainly protonic composition than with a heavy, iron-dominated one. The systematic errors on the absolute mean X_{\max} measurement are 18.7 gm cm⁻², while the differences between QGSJet01, QGSJetII and SIBYLL give an indication of the effect of different theoretical assumptions in the hadronic models. A more quantitative statement about composition can be made by comparing the distribution of measured X_{\max} over some energy range to the expectation for pure protons or iron. Figure 10 shows the X_{\max} distribution for energies $>10^{18}$ eV. Lower energy experiments such as Fly's Eye and HiRes/MIA have larger intrinsic X_{\max} resolutions than the HiRes Stereo result and hence direct comparison is difficult and awaits new experiments. The fluctuations in the data for energies greater than 10^{18} eV are much larger than what is expected for pure iron and a two-component fit to the distribution yields 80% protons for QGSJet and 60% for SIBYLL.

Comparison with Fly's Eye results

Because a change in the CR composition below 10^{18} eV may be an important indicator of a transition between a galactic and extragalactic cosmic-ray flux (or at the least a change in the

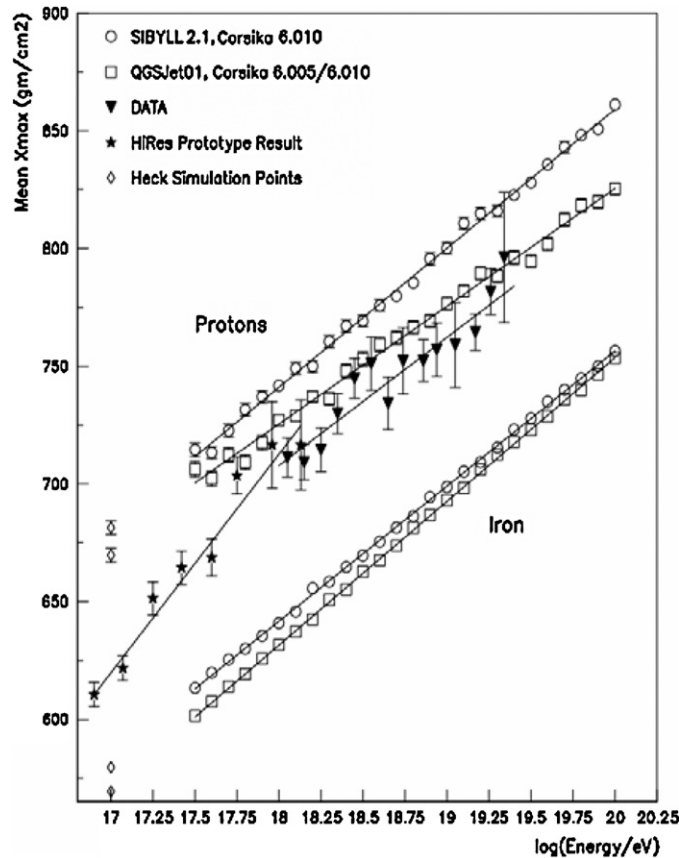


Figure 9. Elongation rate result: theoretical predictions for protons and iron flux and HiRes and HiRes-MIA data.

nature of the CR source itself), it is of great importance to confirm this result. While a new experiment with an energy range covering from below 10^{17} eV to 10^{20} eV would be the ideal and has been proposed [49], the previous Fly's Eye experiment [46] stereo measurements of the elongation rate and fluctuations in the energy range 10^{17} to 10^{19} eV are of interest, even though they have significantly worse X_{\max} resolution (45 gm cm^{-2}). There are quantitative differences between the Fly's Eye and the HiRes and HiRes-MIA result. To see if these differences are significant, the quoted systematic errors on the absolute X_{\max} measurement for both experiments need to be taken into account [50]. Since shower profiles measured above 10^{18} eV had the best resolution in energy and X_{\max} a comparison of Fly's Eye and HiRes stereo mean X_{\max} in this energy range gives the best indication of systematic shifts between the two experiments. The data comparison indicates a systematic shift of 14 gm cm^{-2} , well within the quoted systematic errors. The entire Fly's Eye data can then be shifted upwards by this amount. Figure 11 presents the result, which now shows generally good agreement between HiRes and Fly's Eye throughout the entire energy range. The combined HiRes, HiRes-MIA prototype and Fly's Eye data clearly show a transition from a heavy to a light composition somewhere between 10^{17} and 10^{19} eV. The HiRes data, with better X_{\max} resolution, prefer a more abrupt transition. The X_{\max} distribution fluctuations are also quite consistent between

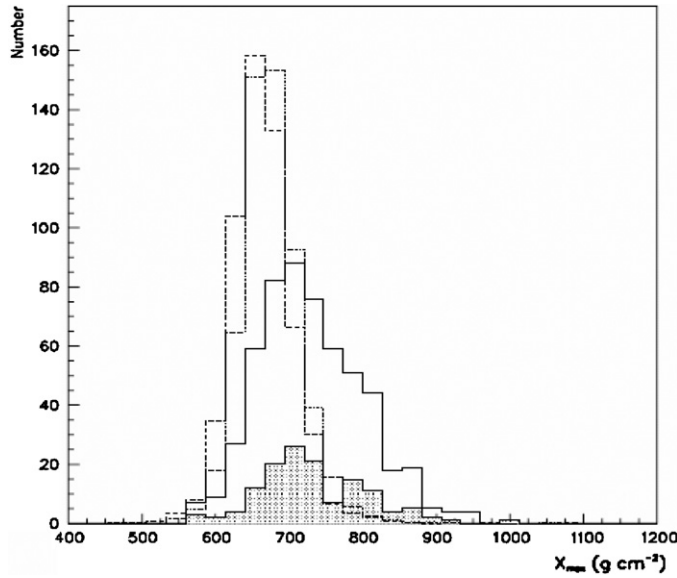


Figure 10. X_{\max} distribution from the HiRes stereo experiment for events with energies $> 10^{18}$ eV. Solid line is the data. Dotted and dash-dotted lines are predictions for pure Fe for two hadronic models normalized to the same area as the data. Shaded histogram corresponds to events where an average atmospheric correction (as opposed to hourly) was made. Data are incompatible with a heavy composition.

Fly’s Eye, HiRes-MIA and HiRes and show evidence for broadening with higher energy, consistent with the trend towards a lighter composition.

Composition from ground array information

Surface arrays can measure the muon content of EAS. The muon density at a given distance from the core has sensitivity to the nature of the primary particle. Simulations indicate that the muon content of iron-initiated showers, at the sea level and with a muon threshold energy of 1 GeV is about 1.4 times greater than for protons for energies near 10^{17} eV. The muon density increases linearly with $\log(E)$ and the slope of this relation can play the same role as the elongation rate for X_{\max} , namely:

$$\beta = d \log(\langle \rho_{\mu}(600) \rangle) / d \log(E).$$

A shower initiated by a nucleus of mass number A , and energy E is a superposition of A subshowers each with energy E/A and thus $\rho_{\mu}(600)$ is proportional to $A(E/A)^{\beta_0}$, where the value of β_0 is dependent on the hadronic interaction model, but in practice is largely independent of A . Hence a deviation of β from what is expected for a pure composition implies a changing composition, i.e. $d \log A / d \log E = \beta - \beta_0 / (1 - \beta_0)$.

Two recent experiments, AGASA and the HiRes-MIA prototype have reported results on the muon content of EAS above 10^{17} eV [51, 52]. We describe these in turn.

The unique feature of the HiRes-MIA experiment is its hybrid nature. The energy of the primary particle is measured by the air-fluorescence technique, while the underground muon detector array samples the muon density at ~ 1 km from the shower core. X_{\max} information is also available from the HiRes detector. The results are shown in figure 12, with $\beta = 0.73 \pm$

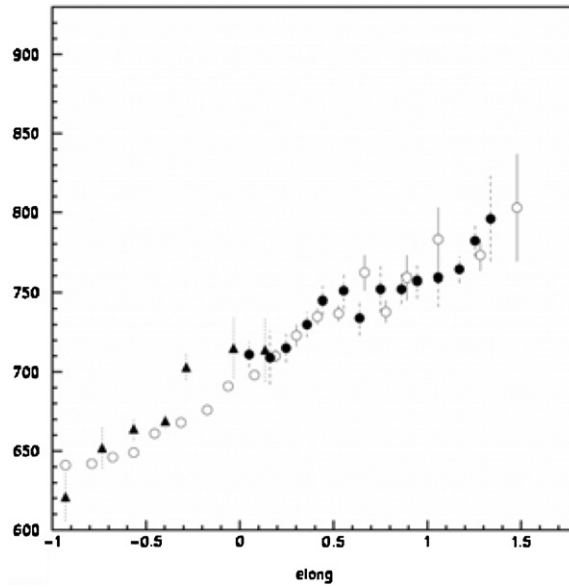


Figure 11. Comparison of Fly's Eye, HiRes-MIA and HiRes. Open circles—Fly's Eye data shifted up by 14 gm cm^{-2} ; filled triangles—Hires Mia data; filled circles—HiRes data.

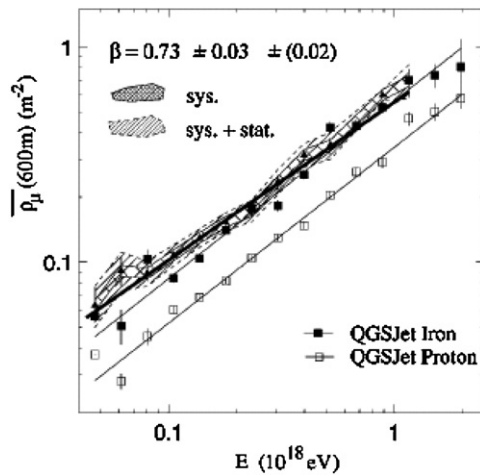


Figure 12. HiRes-MIA result on $\rho_{\mu}(600)$, the muon density at 600 m from shower core, as a function of energy.

0.03 ± 0.02 per decade. Also shown in the figure are results from simulations using the Corsika package and the QGSJet and SIBYLL hadronic interaction models. The QGSJet model after reconstruction and all cuts gives a $\beta = 0.83 \pm .01$ per decade for both protons and iron. SIBYLL predicts significantly fewer muons for both protons and iron showers. Data and simulations are clearly inconsistent with each other in the muon content index beta. While this can be interpreted as supporting a change towards a lighter composition, consistent with the X_{max} measurements described above, there is a problem with the absolute density of muons

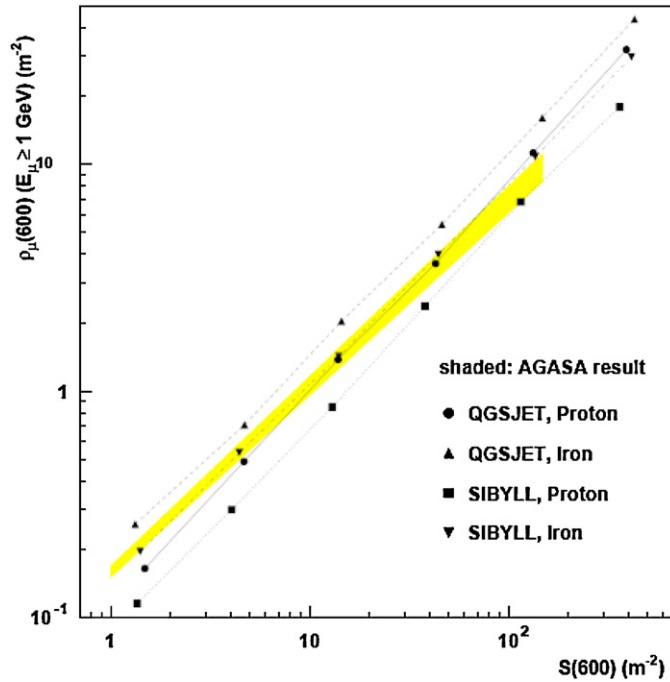


Figure 13. AGASA data on muon density as a function of energy estimator $S(600)$ and comparison with predictions.

at 600 m. The data show values of $\rho_{\mu}(600)$ at lower energies, which are larger than what is predicted for Fe.

A similar problem appears with the combined Akeno and AGASA muon data [51]. The Akeno 1 km² ground array was instrumented with 156 1 m² scintillation counters and 8 25 m² surface muon detectors covered with 2 m of concrete. This experiment had an effective energy range between $10^{16.5}$ eV and $10^{18.5}$ eV. The Akeno experiment relied on the total shower size N_e at an observation level to estimate the primary energy rather than $\rho(600)$. In the AGASA experiment, the relation between muon density $\rho_{\mu}(600)$ and electron density $\rho(600)$ is shown in figure 13, together with predictions using the QGSJet and SYBILL models. This figure shows that AGASA data are in fact marginally consistent with a transition between heavy and light composition between $\rho(600)$ of 1 and 100 m⁻² (corresponding to an energy range of 2×10^{17} to 2×10^{19} eV), since the experimental slope is flatter than the predicted one for a constant composition. The difficulty is that at energies below 10^{17} eV, the predicted value of $\rho_{\mu}(600)$ for iron with either hadronic model will be smaller than the extrapolation from measured data. The lower energy Akeno data can be used to check if that is in fact the case.

However, since the Akeno experiment did not use $\rho(600)$ as the energy estimator, but rather the total shower size at the ground level, a systematic difference in energy scales between the low-energy Akeno and the higher energy AGASA data is possible. Barring such a shift, the $\rho(600)$ and N_e energy estimators can be cross-correlated and the muon density over a wider range of energies can be explored. The result is that the measured Akeno composition becomes heavier than that predicted for iron below 10^{17} eV [53].

Recently, a new hadronic generator, EPOS, has been added into the Corsika framework [36]. EPOS is based on a parton/string model and is unique in that it incorporates an explicit treatment of baryon–antibaryon production. The baryon part of the simulation is

consistent with RHIC data and simulates the observed transverse momentum broadening, parton saturation and screening and other effects [54]. It is also consistent with other accelerator measurements. This model leads to a significant increase in the predicted muon density, with a 40% increase near 10^{17} eV. There is very little change in the X_{\max} predictions, however. The effect is due to increasing the baryon–antibaryon content of the EAS and hence decreasing the energy flow to pions and kaons. A rapid increase in the nucleon–antinucleon production was first observed in air-shower experiments studying delayed hadronic signals near air-shower cores [55]. EPOS predictions are in excellent agreement with the HiRes-MIA $\rho_{\mu}(600)$ data and lead to a self-consistent conclusion about the cosmic-ray composition using both X_{\max} and $\rho_{\mu}(600)$ data. Work is in progress to compare with AGASA and Auger measurements.

The p-air inelastic total cross-section

Several techniques have been proposed and used to measure the total inelastic proton-air cross-section using ultrahigh energy cosmic-ray data. Results from AGASA [56], the Fly’s Eye [57] experiment and the stereo HiRes experiment [58] utilize very different approaches. Here we will discuss the HiRes analysis, as it is the least model dependent.

The slope of the distribution of first interaction in the atmosphere, $\lambda_{\text{p-air}}$ is inversely proportional to $\sigma_{\text{p-air}}$. This distribution, however, is not measurable by the air fluorescence or any other indirect observation technique. What can be measured with good accuracy is the statistical distribution of X_{\max} . The mean of this distribution is used to extract information on composition. The decrement Λ , or slope of the distribution beyond the peak of the X_{\max} distribution, is sensitive to the value of $\lambda_{\text{p-air}}$ with $\Lambda = K\lambda_{\text{p-air}}$, where the value of K is model dependent and ranges from 1.2 to 1.6 [59].

A less model dependent approach was recently developed by the HiRes collaboration. This relies on the fact that the most of the EAS shower development is governed by hadronic interactions and decays at much lower energies, than the energy of the primary particle where most models are in good agreement. Near shower maximum, for example, the mean electron energies are order of 1 GeV to 100 MeV (the critical energy in air). Separating the effects of the first interaction from the subsequent EAS development can lead to more reliable results.

The observable X_{\max} distribution can be considered to be a convolution of two distributions. The first is the distribution of the depth of the first interaction, which can be approximated by an exponential function:

$$N_1(x) = \exp(-x/\lambda_{\text{p-air}}).$$

The second is the distribution in depth variable $X' = X_{\max} - X_1$, where X_1 is the depth of the first interaction. The distribution in X' can be calculated in Monte Carlo simulations and can be approximated by a power-exponent function of three parameters. These parameters can be studied as a function of energy in Monte Carlo simulation and thus the function of X' becomes a ‘known’ function. As expected, the three parameters are largely independent of different hadronic model assumptions.

The X_{\max} distribution is then a convolution of known functions with one unknown parameter, $\lambda_{\text{p-air}}$. Simulations show that the input value of $\lambda_{\text{p-air}}$ is correctly found, within statistical errors, by this method, for both QGSJet and SIBBYL models. Figure 14 shows the fit to the data and the value of $\lambda_{\text{p-air}}$ extracted from deconvolution.

The proton-air inelastic cross-section found by this method at 3×10^{18} eV is shown in figure 15 together with measurements by Akeno and the Fly’s Eye results and lower energy data.

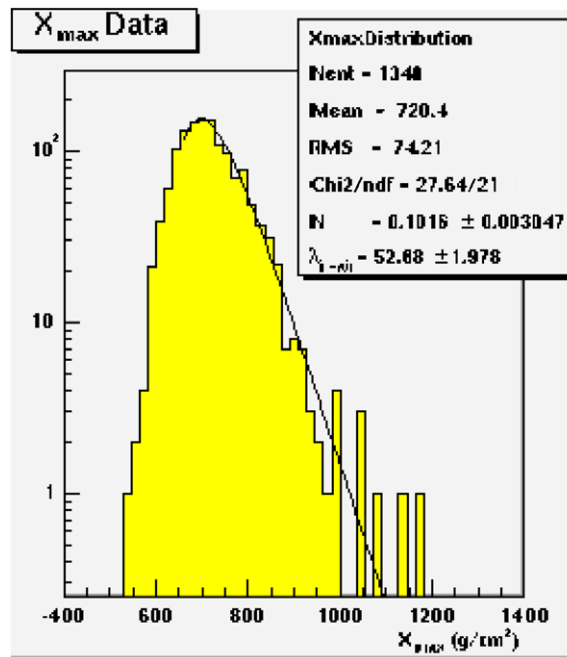


Figure 14. Distribution of X_{\max} and fit using a deconvolution method.

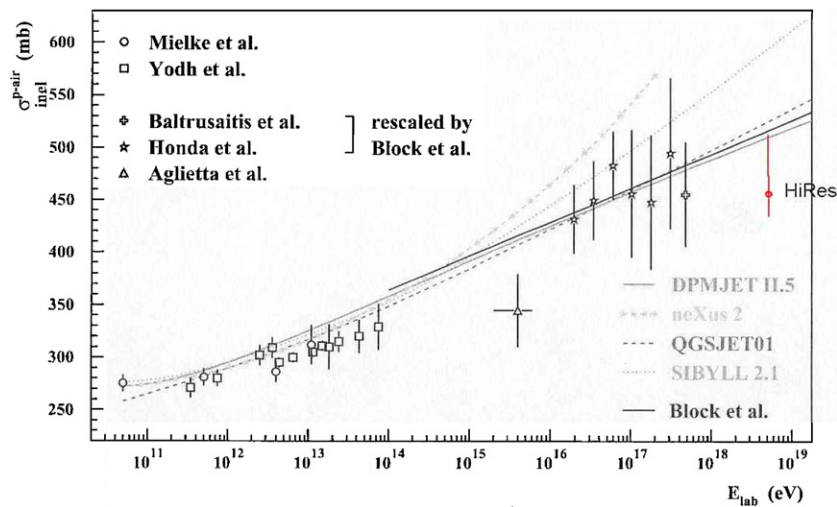


Figure 15. Inelastic cross-section measurements and predictions from a variety of hadronic models. HiRes data point includes systematic errors from possible 5% gamma-ray contamination.

Small-scale anisotropy

One of the outstanding questions of cosmic-ray physics is, ‘What are the sources of these particles?’ For galactic cosmic-rays, a growing consensus maintains that the sources are supernova remnants [60]. Recent Hess TeV gamma-ray results showing flatter than expected spectra from many extended galactic objects are consistent with this expectation [61]. The

remnants of O and B stars, in ‘superbubbles’, may play a particularly strong role in accelerating galactic cosmic-rays [62]. The supermassive black hole at the centre of the Milky Way galaxy is said to be only about 10^6 solar masses, and has low luminosity, so it is not thought to contribute to the cosmic-ray flux in a significant way [63]. Supermassive black holes in other galaxies, however, are one of the main candidates for accelerating extragalactic UHE cosmic-rays [64]. If this is true then cosmic-rays of sufficiently high-energy may propagate in almost straight-line trajectories through the extragalactic and galactic magnetic fields from these sources and point back to them. Every cosmic-ray experiment carries out a search for small-scale anisotropy (e.g., point sources, possibly blurred by magnetic bending).

The AGASA experiment found a large autocorrelation signal among their events at energies greater than 4×10^{19} eV. They also found seven clusters of events, six doublets and a triplet, where they would expect between one and two from random coincidences given the statistics of their data. Several models of cosmic-ray sources were devised to explain these results, one of which consisted of a count of the minimum number of sources needed to produce the clustering result (it is about 200).

A similar autocorrelation searched was performed for the HiRes data and no significant signal was seen [65]. To understand this discrepancy better, the HiRes collaboration carried out a study [66] whose ansatz was that the seven AGASA clusters represent the seven brightest sources of cosmic-rays. If this were true then HiRes would be likely to observe events correlated with those of the AGASA clusters. This study used the HiRes stereo data with selection criteria similar to those of AGASA. Because of the discrepancies in the normalization of the cosmic-ray spectrum between the two experiments, an exact match is not possible because there is no linear transformation (such as an energy scale shift), which can bring the numbers of events observed by AGASA and HiRes into agreement as a function of energy. The AGASA events have an angular resolution of about 2° , while the HiRes stereo event resolution is about 0.6° . The result of this study was that no HiRes events of energy above 4×10^{19} eV were correlated with the AGASA clusters. However, an event was found, with an energy of 3.7×10^{19} eV, right in the middle of the AGASA triplet. The AGASA triplet, plus this HiRes event, are now called the ‘quartet’. The chance probability of this occurring is about 10^{-3} . A sky map of the quartet is shown in figure 16. The colours at different locations on the sky indicate the probability of finding the centre of the quartet at that location. The pointing accuracy of the HiRes stereo event dominates the determination of the most likely location, which is (RA, dec) = (169.1 + -0.6 , 56.3 + -0.4) degrees. It will be interesting to see if TA sees something at this location in the sky. The quartet is in Ursa Major, and is not visible from the location of the Auger experiment.

Correlations with BL Lac objects

I Tkachev, P Tinyakov, D Gorbunov and others pioneered the search for correlations between cosmic-ray events and BL Lac sources. BL Lac’s (also called blazars) are extragalactic astronomical objects (highly variable AGNs) with their jets pointing directly towards the earth. They are good candidates for cosmic-ray accelerators because of this geometry. Tkachev *et al* [67] and D Gorbunov *et al* [68] first searched the Yakutsk and AGASA data above 4.0×10^{19} eV using the Veron catalogue of BL Lac objects, and found correlations at the 10^{-4} chance probability level. They then searched HiRes stereo data above 10^{19} eV, assuming a uniform angular resolution of 0.8° , and found correlations at the 10^{-4} chance probability level [69]. In these studies, they made one cut on the Veron catalogue events, choosing BL Lac’s brighter than magnitude 18. Such sources are described in the catalogue as being better identified BL Lac’s.

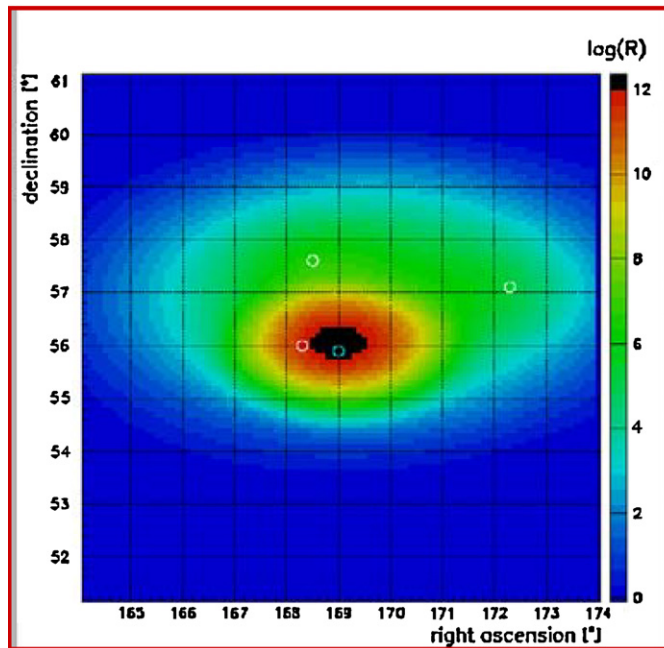


Figure 16. Sky map of the AGASA and HiRes events making up the ‘quartet’. The HiRes event is at the centre of the darkest region. The scale represents a logarithmic likelihood ratio.

The HiRes collaboration repeated the correlation study taking into account the pointing resolution of each event and was able to reproduce the result described above [70]. There is an additional category of sources in the Veron catalogue, BL Lac’s with high polarization (so-called HP sources), which Tkachev and collaborators neglected. Upon including the HP sources correlations were found at the chance probability level of 10^{-5} . These studies were carried out with HiRes stereo data collected through January 2004. Analysis of the remainder of the HiRes data, and studies of other properties, such as the energy spectrum of all events and correlated events, are ongoing.

There are several interesting aspects of BL Lac correlations. One is that those with Yakutsk and AGASA data are consistent with the bending of cosmic-rays by galactic magnetic fields (at about 1° for protons), but the HiRes stereo events have pointing resolution about $1/3$ of the expected bending angles. So, if the correlations are real, about 3% of cosmic-rays must be neutral, or the galactic magnetic fields must be smaller than expected, at least in some directions. In addition, searching for correlations with BL Lac sources is mostly a northern hemisphere activity since only about $1/3$ as many BL Lac sources are known in the southern hemisphere. The figure of merit for BL Lac searches is A/R^2 , where A is the aperture and R is the angular resolution. Cosmic-ray events seen in hybrid and stereo modes simultaneously have the best resolution, so future experiments should try to optimize their hybrid-stereo aperture. Further data (and future experiments) in this area will be very interesting.

Large-scale anisotropy

The AGASA experiment saw an interesting anisotropy signal at larger angular scales [71]. In the Raleigh analysis of their data in a narrow energy band (about a factor of 2 wide) about

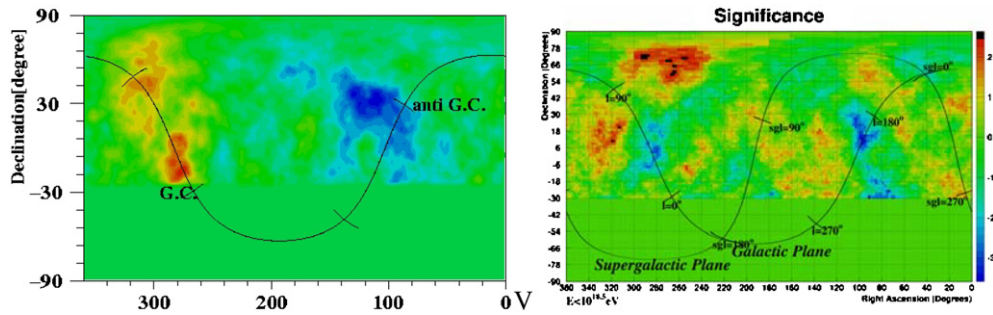


Figure 17. Significance maps of AGASA (left) and HiRes (right) showing the deficit near the galactic anticentre ($RA = 100^\circ$, $\delta = 18^\circ$) in both data. Right ascension is shown on the x -axis and declination on the y -axis.

10^{18} eV, the AGASA experiment saw an excess of events near (but not at) the galactic centre and a deficit of events near but not at the galactic anticentre. The events were integrated over 20° for this study. The narrowness of the energy band raises doubts about the reality of such an effect. These two regions have now been examined in the HiRes and Auger data. The Auger collaboration analysed their data in a similar way to AGASA and published a non-observation of excess near the galactic centre [72]. In the northern hemisphere, this region of the sky is observed in summer, which reduces observation time because of short nights. HiRes does not have the sensitivity to make statements about anisotropy near the galactic centre.

However, near the galactic anticentre, in Scorpius, HiRes sees a deficit of events in almost the same place as the AGASA deficit. Figure 17 shows the AGASA and HiRes sky maps in right ascension and declination. Here the HiRes data have not been limited in energy, but include the whole energy range, 10 326 events in all. However, the HiRes energy histogram peaks at 10^{18} eV, just at the centre of the AGASA energy band.

One usually thinks of anisotropy studies as searching for excesses, not deficits, in the data. One way a deficit might occur is through the galactic magnetic field integral being large enough in some directions to exclude extragalactic cosmic-rays coming from those directions. This in fact occurs with some field models [73]. Again, the TA experiment will have interesting things to say about this possible anisotropy signal. The galactic anticentre appears at a zenith angle of 70° for the Auger experiment, so it is unlikely that they can observe this part of the sky with good statistics and systematics.

Shower development profile

While most of the hadronic interactions and decays that produce an EAS are at low energies, it is important to validate the complex simulation programs that are required to predict such profiles. The HiRes/MIA hybrid data were used to study the development profile of showers [74]. Shower profiles of well-measured events were normalized to each other in terms of maximum shower size and depth of maximum and averaged. To normalize out the X_{\max} fluctuation, the shower was rescaled in terms of the shower age parameter. The resultant mean shower and the predicted functional form (the Gaisser–Hillas function) are in good agreement over most of the longitudinal development.

The HiRes monocular data (from HiRes-II) have also been used to study the development profile of showers. Here a different approach was taken than in the HiRes/MIA case: a direct comparison was made between data and Monte Carlo events generated using Corsika and

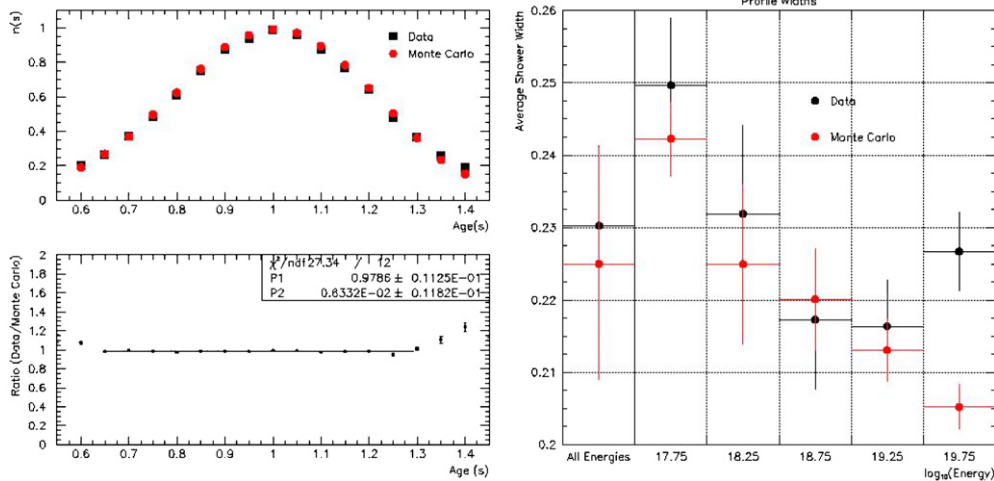


Figure 18. Preliminary plots of the longitudinal shower development profile for HiRes-II monocular data and Corsika/QGSjet simulations. The age distribution for $E > 10^{18.5}$ eV is shown in the left-hand plot, and a plot of data and Monte Carlo profile widths for half-decade bins in energy are shown in the right-half plot. The agreement seems to be good, but there may be a discrepancy in shower profile widths for the highest energy bin.

QGSjet. This is made possible by the excellent agreement between HiRes data and our Monte Carlo simulation. Shower age is again used for the comparison. After averaging over events, the data/MC comparison of the age distributions for all energies is shown in the left part of figure 18. The ratio of data to MC is shown in the lower part of the figure. The agreement is good.

The HiRes monocular data allow one to make these comparisons for a wider energy range than was possible with HiRes/MIA. The width of data and MC age distributions is shown in the right part of figure 18, for each half-decade in energy. The error bars in this figure are the statistical uncertainties. In addition, there are systematic uncertainties of about 0.005. A discrepancy in shower widths is apparent for the highest energy showers. The size of the discrepancy is about four times the systematic uncertainty. As there are more systematic studies to be done, this result is still preliminary.

Conclusions

One can look at the history of UHE cosmic-ray experiments as having three phases. The original, pioneering phase, exemplified by experiments such as Akeno, Haverah Park, Yakutsk and Fly's Eye established the broad outlines of the subject, finding the first evidence of a structure near the ankle and having just barely enough sensitivity to begin to explore the GZK region. In the second phase, the AGASA experiment gave us the first significant attempt to look for the GZK cutoff. Their observation of a continuing spectrum, together with the handful of events from earlier experiments above the GZK energy, was a great puzzle. However, indirect methods of energy determination used by ground arrays can lead to misleading results. The HiRes experiment clearly established the existence of the GZK cutoff using the atmospheric fluorescence technique. The re-analysis of the AGASA data has decreased the discrepancy between it and the HiRes result and has re-iterated the importance of a better understanding

of the meaning of ground array energy measurements. We are now entering the third phase, where ground array and air-fluorescence techniques are being combined in hybrid experiments such as the Telescope Array project in Utah and the Pierre Auger Observatory in Argentina. New information from the LHC and Fermilab experiments will allow further refinements in the modelling of EAS. Direct comparison of ground array and air-fluorescence data on an event-by-event basis and vis-à-vis simulations will improve knowledge of energy scales and experimental resolutions.

While it appears that the GZK puzzle has now been set to rest, the underlying questions are as urgent and burning as ever: what are the sources of UHE cosmic-rays, what is the nature of the acceleration mechanism and what is the composition of the particles? Tantalizing hints of point sources have begun to appear in the last decade. Significant measurements of anisotropy, both on large and small scales, seem just within reach. The new generation of detectors, with order of magnitude larger sensitivities and excellent angular resolution, should make a great impact in this area.

As the detailed structure of the cosmic-ray spectrum becomes more reliably known, explicit fits to source models and propagation distances have become possible. Here experiments with a large dynamic range in energy are of the greatest importance, so that the region from the second knee to the GZK cutoff can be studied in a continuous fashion. The robust and reliable measurement of composition across this same energy range is also of the highest importance as it, together with broad-scale anisotropy, is the only way that the galactic and extra-galactic components of the UHE cosmic-ray flux will be unravelled. Both the TA and Auger experiments are looking seriously at low-energy extensions to achieve these goals and the next decade should allow us to get a good understanding of the galactic-extragalactic transition region.

References

- [1] Yoshida S *et al* 1995 *Astropart. Phys.* **3** 105
- [2] Arai Y *et al* 2003 *Proc. 28th Int. Cosmic Ray Conf. (Tsukuba, Japan)* vol 2 p 1025
- [3] Bluemer J 2003 *Proc. 28th Int. Cosmic Ray Conf. (Tsukuba, Japan)* HE 445
- [4] Baltrusaitis R M *et al* 1985 *Nucl. Instrum. Methods A* **240** 410
- [5] Abu-Zayyad T 1997 *Proc. 25th Int. Cosmic Ray Conf. (Durban, S. Africa)* vol 5 p 325
- [5] Abu-Zayyad T *et al* 2000 *Nucl. Instrum. Methods A* **450** 253
- [6] Linsley J 1963 *Phys. Rev. Lett.* **10** 146
- [7] Winn M M *et al* 1986 *J. Phys. G: Nucl. Phys.* **12** 653
- [8] Lawrence M A, Reid R J O and Watson A A 1991 *J. Phys. G: Nucl. Part. Phys.* **17** 773
- [9] Efimov N N *et al* 1991 *Astrophysical Aspects of the Most Energetic Cosmic Rays* ed M Nagano and F Takahara (Singapore: World Scientific) p 20
- [10] Pagano M *et al* 1992 *J. Phys. G: Nucl. Part. Phys.* **18** 423
- [11] Greisen K 1968 *Phys. Rev. Lett.* **16** 748
- [11] Zatsepin G T and Kuzmin V A 1966 *JETP Lett.* **4** 78
- [12] Berezhinsky V *et al* 2007 *Preprint hep-ph/0204357v3*
- [13] Berezhinsky V S and Grigor'eva S I 1988 *Astron. Astrophys.* **199** 1
- [13] Berezhinsky V S, Gazizov A Z and Grigorieva S I 2005 *Phys. Lett. B* **612** 147
- [14] Abbasi R U *et al* 2005 *Phys. Lett. B* **619** 271
- [15] Antoni T *et al* 2005 *Astropart. Phys.* **24** 1–25
- [16] Bunner A J *et al* 1968 *Can. J. Phys.* **46** 5266
- [17] Kakimoto F *et al* 1996 *Nucl. Instrum. Methods Res. A* **372** 527
- [17] Pagano M *et al* 2004 *Astropart. Phys.* **22** 235
- [18] Belz J W *et al* 2006 *Astropart. Phys.* **25** 129
- [18] Huentemyer P *et al* 2003 *AIP Conf. Proc.* **698** 341–44
- [19] Arciprete F *et al* 2006 *Czech. J. Phys.* **56** (Supl. 1) A361
- [20] Abbasi R U *et al* 2006 *Astropart. Phys.* **25** 93

- Abbasi R U *et al* 2006 *Astropart. Phys.* submitted
- [21] Clay R *et al* 1999 *Proc. 26th Int. Cosmic Ray Conf. (Salt Lake City, USA)* vol 5 p 421
- [22] Abu-Zayyad T *et al* 2001 *Nucl. Instrum. Methods A* **460** 278
Abu-Zayyad T *et al* 2002 *Astropart. Phys.* **18** 237
- [23] Hillas A M *et al* 1971 *Proc. 12 Int. Cosmic Ray Conf. (Hobart, Tasmania)* vol 3 p 1001
Hillas A M 1970 *Acta Phys. Acad. Sci. Hung.* **29** 355
- [24] Bower A J *et al* 1983 *J. Phys. G: Nucl. Phys.* **9** L53
- [25] Christiansen G B *et al* 1985 *Proc. 19th Int. Cosmic Ray Conf. (La Jolla, USA)* vol 9 p 487
- [26] Mantsch P *et al* 2005 *Proc. of the 29th Int. Cosmic Ray Conf. (Pune, India)* p 101
- [27] Ranft J 1995 *Phys. Rev. D* **51** 64
- [28] Drescher H J *et al* 2001 *Phys. Rep.* **350** 93
- [29] Kalmykov N N and Ostapchenko S S 1993 *Phys. At. Nucl.* **56** 346
Kalmykov N N *et al* 1997 *Nucl. Phys. Proc. Suppl. B* **52** 17
- [30] Engel R *et al* 1999 *Proc. 26th Int. Cosmic Ray Conf. (Salt Lake City, Utah)* vol 1 p 415
- [31] Meurer C *et al* 2006 *Czech. J. Phys.* **56** A211
- [32] Drescher H J *et al* 2004 *Astropart. Phys.* **21** 87
- [33] Meyer H *Nucl. Phys. B—Proc. Suppl.* **142** 453
Seun S *Nucl. Phys. B—Proc. Suppl.* **142** 566
- [34] Deile M 2004 *Preprint hep-ex/0410084*
Cox B E 2006 *Preprint hep-ph/0609209*
Adriani O *et al* 2006 *Czech. J. Phys. A* **56** (Supl. 1) 107
- [35] Werner K *et al* 2006 *Phys. Rev. C* **74** 044902
- [36] Pierog T and Werner K 2006 *Preprint astro-ph/0611311*
- [37] Bird D J *et al* 1993 *Phys. Rev. Lett.* **71** 3401
- [38] Bird D J *et al* 1995 *Astrophys. J.* **441** 144
- [39] Linsley J 1963 *Phys. Rev. Lett.* **10** 146
Lawrence M A *et al* 1991 *J. Phys. G: Nucl. Part. Phys.* **17** 733
- [40] Hayashida N *et al* 1999 *Astropart. J.* **522** 225
Takeda M *et al* 2003 *Astropart. Phys.* **19** 447
- [41] Shinozaki K 2006 *Proc. Quarks 2006 Conf. (Repino, Russia)*
Teshima M *et al* 2006 *Proc. CRIS 2006 (Catania, Sicily)*
- [42] Heck D 1998 *Forschungszentrum Karlsruhe Report FZKA 6019*
- [43] Sciutto S J 1999 *Preprint astro-ph/9911331*
- [44] Abbasi R U *et al* 2005 *Phys. Lett. B* **619** 271
- [45] Sokolsky P *et al* 2006 *Proc. CRIS2006 (Catania, Sicily)*
- [46] Gaisser T K *et al* 1993 *Comments Astrophys.* **17** 103
Gaisser T K *et al* 1993 *Phys. Rev. D* **47** 1919
- [47] Allard D *et al* 2007 *Astropart. Phys.* **27** 61
- [48] Abbasi R U *et al* 2005 *Astrophys. J.* **622** 910
- [49] Thomson G B *et al* 2005 *Proc. 29th Int. Cosmic Ray Conf. (Pune, India)*
- [50] Abbasi R U *et al* 2005 *Proc. 29th Int. Cosmic Ray Conf. (ICRC 2005) (Pune, India)*
- [51] Hayashida N *et al* 1995 *J. Phys. G: Nucl. Part. Phys.* **21** 1101
- [52] Abu-Zayyad T *et al* 2000 *Phys. Rev. Lett.* **84** 4276
- [53] Nagano M *et al* 2000 *Astropart. Phys.* **13** 4 277
- [54] Werner K *et al* 2006 *Phys. Rev. C* **74** 044902
- [55] Goodman J A *et al* 1982 *Phys. Rev. D* **26** 1043
- [56] Honda M *et al* 1993 *Phys. Rev. Lett.* **70** 525
- [57] Baltrusaitis R M *et al* 1984 *Phys. Rev. Lett.* **52** 1380
- [58] Abbasi R U *et al* 2005 *Proc. 29th Int. Cosmic Ray Conf. (ICRC 2005) (Pune, India)*
- [59] Ellsworth R W *et al* 1982 *Phys. Rev. D* **26** 336
- [60] Blandford R D and Ostriker J P 1980 *Astrophys. J.* **237** 793
Ellison D C *et al* 2000 *Astrophys. J.* **540** 292
- [61] Hinton J A 2004 *New Astron. Rev.* **48** 331
Aharonian F *et al* 2005 *Astron. Astrophys.* **430** 865
- [62] Higdon J C *et al* 1998 *Astrophys. J.* **509** 1, L33
Binns W R *et al* 2005 *Proc. Workshop on the End of the Galactic Cosmic Ray Spectrum (Aspen)*
- [63] Melia F and Falcke H 2001 *Annu. Rev. Astron. Astrophys.* **39** 309
- [64] Takeda M *et al* 2003 *Astropart. Phys.* **19** 447

-
- [65] Abbasi R U *et al* 2004 *Astrophys. J.* **610** L79
Abbasi R U *et al* 2004 *Astropart. Phys.* **22** 139
 - [66] Abbasi R U *et al* 2005 *Astrophys. J.* **623** 164
 - [67] Tkatchev I *et al* 2001 *JETP* **74** 445
 - [68] Gorbunov D *et al* 2002 *Astrophys. J.* **577** L93
 - [69] Gorbunov D *et al* 2004 *JETP Lett.* **80** 145
 - [70] Abbasi R U *et al* 2006 *Astrophys. J.* **636** 680
 - [71] Hayashida N *et al* 1999 *Astropart. Phys.* **10** 303
 - [72] Aglieta M *et al* 2006 *Preprint* astro-ph/0607382
 - [73] Stanev T 1979 *Astrophys. J.* **479** part 1 290
 - [74] Abu-Zayyad T *et al* 2001 *Astropart. Phys.* **16** 1